

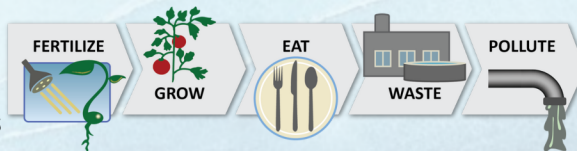
NUTRIENT CYCLING for Lake Champlain

Human urine is rich in plant nutrients.

Where do **your** nutrients go?

Nutrient Pollution

When we flush, the nutrients in our urine often pass through our wastewater treatment systems and enter our watersheds where they can contribute to nutrient pollution. Too much nitrogen or phosphorus in water bodies can cause harmful algal blooms, damaging our drinking water sources, recreation areas, and aquatic ecosystems.



Nutrient Cycling

Instead of contributing to pollution, human urine can be recycled as a safe, effective fertilizer for farms and gardens. By completing the food nutrient cycle upstream, we can help protect our downstream neighbors -- and grow an abundance of food from locally sourced nutrients.

Join the global movement to reclaim our “waste” as a resource! Peecycling can be done at the community-scale, building-scale, or in your own garden.



Turn the page to learn how you can get involved!





PEE THE CHANGE!

Learn about peecycling in...



Community Guide

Communities

The Rich Earth Institute has operated the nation's first and largest community-scale urine nutrient reclamation program since 2012. We are now supporting communities across the country in starting their own peecycling programs!

Guide: Read our Community-scale Guide!

AS SEEN ON:

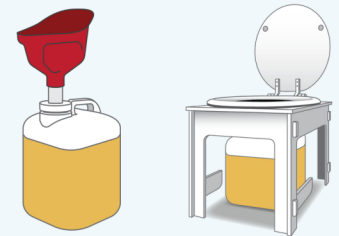
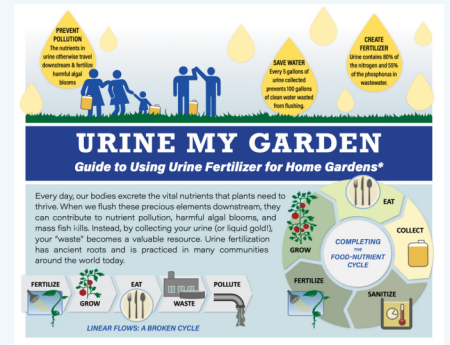


"Urine My Garden" Resources

Home gardens

The Rich Earth Institute's 'Urine My Garden' education program teaches gardeners how to safely and effectively fertilize crops with urine. By peecycling, gardeners can grow a more abundant garden harvest, protect their local watershed, and conserve clean water otherwise used for flushing!

- Webinars:** Rich Earth offers free webinars that cover both the big picture and basic practicalities of peecycling in home gardens. Is your organization interested in co-hosting a webinar from us? Get in touch!
- Guide:** Read our "Urine My Garden" guide to start peecycling in your own garden.
- Peecycling kits:** Rich Earth distributes stand-alone devices for easily and odorlessly collecting urine for use in home gardens.
- Community Science:** Do you already fertilize your garden with urine? We want to hear about it! Share your experiences via our community science survey.



Youth Education

Classrooms

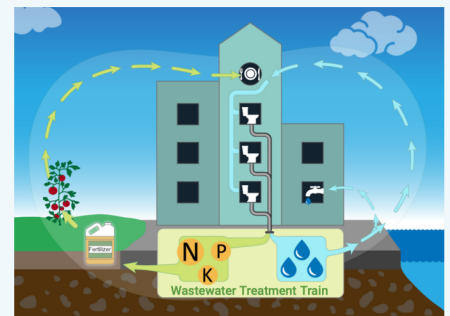
Rich Earth offers virtual or in-person workshops for classrooms and other youth groups. Our peecycling lesson plan is adaptable for K-12 and integrates learning about water conservation and watershed health, nutrients and nutrient cycling, food production, infrastructure, and community resilience.



Brightwater Tools

Buildings

Brightwater Tools, a spin-off company of the Rich Earth Institute, is developing technologies for building-scale nutrient recovery systems.



CONTACT US

General Inquiries

info@ricearthinstitute.org

Julia Cavicchi, Education Director

julia@ricearthinstitute.org

ricearthinstitute.org

@peecyclers

@RichEarthInstitute